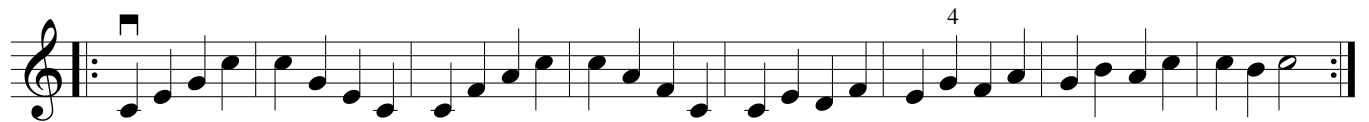
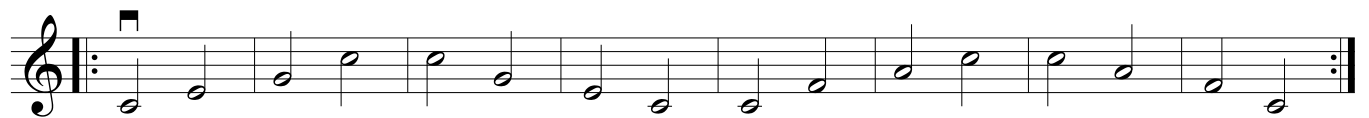
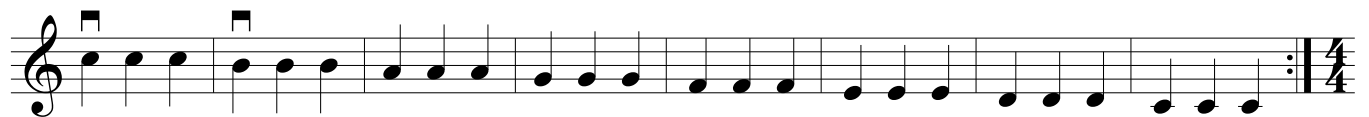
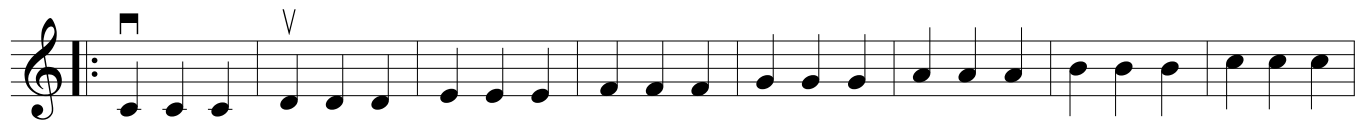


C MAJOR SCALE

Violin

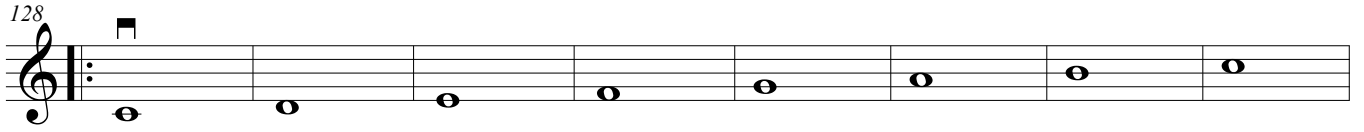
The image displays a violin score for the C Major Scale, consisting of nine staves of music. The first staff is labeled 'Violin' and begins with a treble clef, a 4/4 time signature, and a key signature of one sharp (F#). The scale is written in a single line, starting on middle C (C4) and ascending to C5. The notes are: C4 (half note), D4 (quarter), E4 (quarter), F#4 (quarter), G4 (quarter), A4 (quarter), B4 (quarter), C5 (half). The second staff continues the scale from D4 to C5. The third staff continues from E4 to C5. The fourth staff continues from G4 to C5. The fifth staff continues from B4 to C5. The sixth staff continues from C5 to B4. The seventh staff continues from A4 to C4. The eighth staff continues from G4 to C4. The ninth staff continues from E4 to C4 and includes a fermata over the final C4. A measure number '57' is written above the first measure of the final staff. A 'V' (Vibrato) marking is placed above the final measure of the scale.

C MAJOR SCALE

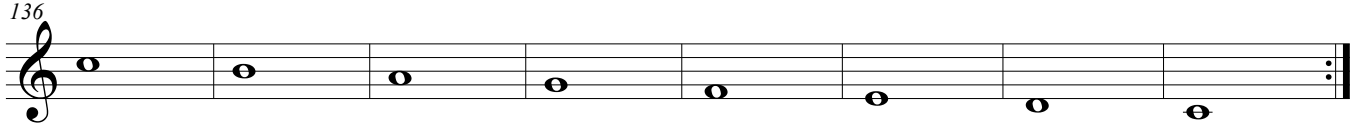


C MAJOR SCALE

128



136



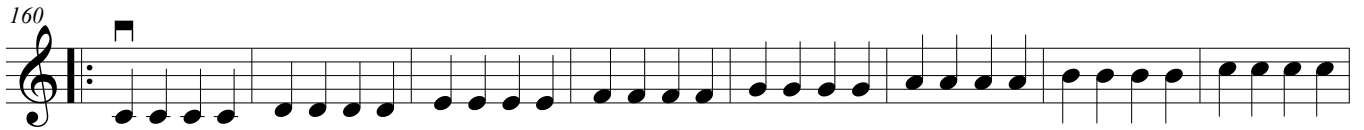
144



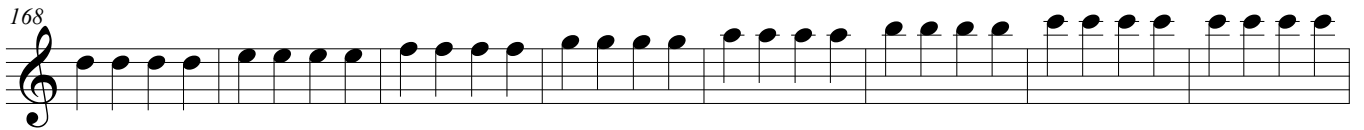
152



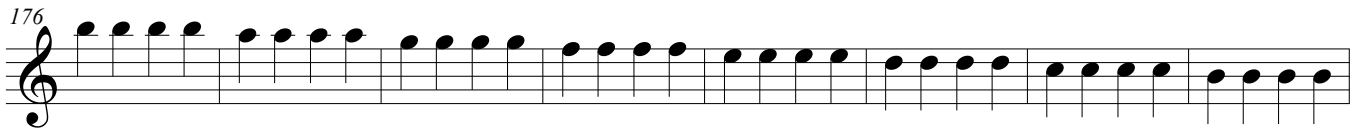
160



168



176



184

