

# Double Bass

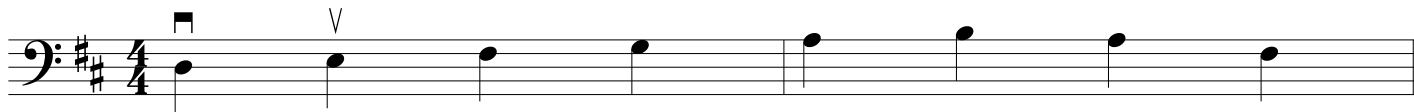
Fundamentals Materials

## Bowing Techniques

Overture Orchestra

SC

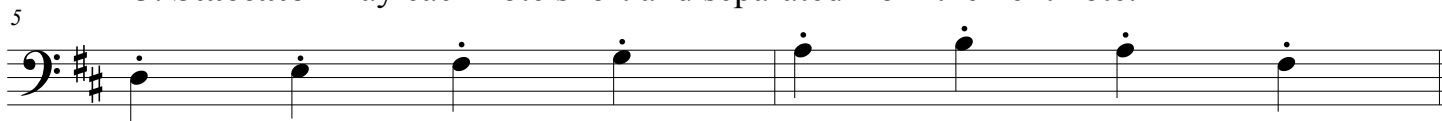
1. **Détaché**- play each note with a separate bow, using either full bows, the upper half, UH, of the bow, the lower half, LH, of the bow, or the middle of the bow.



2. **Broad Stroke Détaché**- use a full bow.



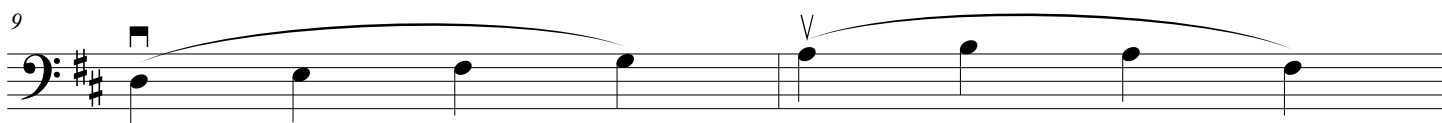
3. **Staccato**- Play each note short and separated from the next note.



4. **Two Note Slurs**- Play two notes evenly in one bow stroke.



5. **Four Note Slurs**- Play four notes evenly in each bow stroke.



6. **Two Note Slurs and Two Notes Détaché.**

