

Cello

— = half step

# FOUR KEY ETUDE #1A

C. Umberger

## KEY OF D MAJOR - D E F# G A B C# D

C string

G string

D string

A string

The first section is in D Major. The C string part starts with a natural D (fingered -1) and moves through the scale: D (1), E (2), F# (4+), F# (4+), E (4+), D (4+), C# (4+), C# (4+), D (4+), E (4+), F# (4+), F# (4+), E (4+), D (4+), C# (4+). The G string part starts with a natural G (fingered 0) and moves through the scale: A (1), B (2), C# (4+), C# (4+), B (4+), A (4+), G (4+), G (4+), A (4+), B (4+), C# (4+), C# (4+), B (4+), A (4+), G (4+). The D string part starts with a natural D (fingered 0) and moves through the scale: E (1), F# (3), G (4), G (4), F# (4), E (4), D (4), D (4), E (4), F# (4), G (4), G (4), F# (4), E (4), D (4). The A string part starts with a natural A (fingered 0) and moves through the scale: B (1), C# (3), D (4), D (4), C# (4), B (4), A (4), A (4), B (4), C# (4), D (4), D (4), B (4), C# (4), A (4). The piece concludes with a double bar line and a key signature change to D minor.

## KEY OF G MAJOR - G A B C D E F# G

C string

G string

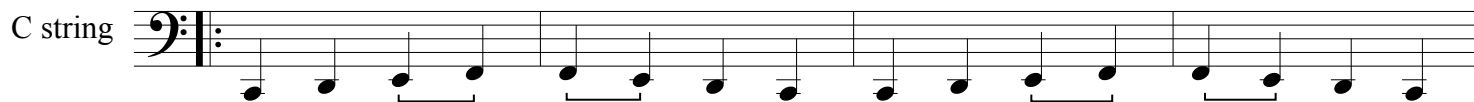
D string

A string

The second section is in G Major. The C string part starts with a natural C (fingered 0) and moves through the scale: D (1), E (2), F# (4+), F# (4+), E (4+), D (4+), C (4+), C (4+), D (4+), E (4+), F# (4+), F# (4+), E (4+), D (4+), C (4+). The G string part starts with a natural G (fingered 0) and moves through the scale: A (1), B (3), C (4), C (4), B (4), A (4), G (4), G (4), A (4), B (4), C (4), C (4), B (4), A (4), G (4). The D string part starts with a natural D (fingered 0) and moves through the scale: E (1), F# (3), G (4), G (4), F# (4), E (4), D (4), D (4), E (4), F# (4), G (4), G (4), F# (4), E (4), D (4). The A string part starts with a natural A (fingered 0) and moves through the scale: B (1), C (2), D (4), D (4), C (4), B (4), A (4), A (4), B (4), C (4), D (4), D (4), C (4), B (4), A (4). The piece concludes with a double bar line and a key signature change to G minor.

## FOUR KEY ETUDE #1A

## KEY OF C MAJOR- C D E F G A B C



## KEY OF F MAJOR - F G A Bb C D E F

